

**BALDOR® • RELIANCE** 

**Product Information Packet**

**ZDM2333T**

**44M 4P TEBC HOR 256TC T'STATS VECTOR**

| Part Detail |        |             |            |             |        |               |            |
|-------------|--------|-------------|------------|-------------|--------|---------------|------------|
| Revision:   | -      | Status:     | PRD/A      | Change #:   |        | Proprietary:  | No         |
| Type:       | AC     | Elec. Spec: | 09WGZ910   | CD Diagram: | CD0005 | Mfg Plant:    |            |
| Mech. Spec: | 09T110 | Layout:     | 09LYT110   | Poles:      | 04     | Created Date: | 03-13-2019 |
| Base:       | RG     | Eff. Date:  | 06-27-2019 | Leads:      | 9#12   |               |            |

| Specs                           |                         |                                |                       |
|---------------------------------|-------------------------|--------------------------------|-----------------------|
| Catalog Number:                 | ZDM2333T                | Insulation Class:              | H                     |
| Enclosure:                      | TEBC                    | Inverter Code:                 | Inverter Duty         |
| Frame:                          | 256TC                   | KVA Code:                      | H                     |
| Frame Material:                 | Iron                    | Lifting Lugs:                  | Standard Lifting Lugs |
| Output @ Frequency:             | 15.000 HP @ 60 HZ       | Locked Bearing Indicator:      | Locked Bearing        |
| Synchronous Speed @ Frequency:  | 1800 RPM @ 60 HZ        | Motor Lead Quantity/Wire Size: | 9 @ 12 AWG            |
| Voltage @ Frequency:            | 460.0 V @ 60 HZ         | Motor Lead Exit:               | Ko Box                |
|                                 | 230.0 V @ 60 HZ         | Motor Lead Termination:        | Flying Leads          |
| XP Class and Group:             | None                    | Motor Type:                    | 0944M                 |
| XP Division:                    | Not Applicable          | Mounting Arrangement:          | F1                    |
| Agency Approvals:               | CSA                     | Power Factor:                  | 83                    |
|                                 | UR                      | Product Family:                | General Purpose       |
| Auxillary Box:                  | No Auxillary Box        | Pulley End Bearing Type:       | Ball                  |
| Auxillary Box Lead Termination: | None                    | Pulley Face Code:              | C-Face                |
| Base Indicator:                 | Rigid                   | Pulley Shaft Indicator:        | Standard              |
| Bearing Grease Type:            | Polyrex EM (-20F +300F) | Rodent Screen:                 | None                  |
| Blower:                         | BLOWER                  | RoHS Status:                   | ROHS COMPLIANT        |
| Current @ Voltage:              | 18.100 A @ 460.0 V      | Shaft Extension Location:      | Pulley End            |

Product Information Packet: ZDM2333T - 44M 4P TEBC HOR 256TC T'STATS VECTOR

|                                       |                           |                                    |                            |
|---------------------------------------|---------------------------|------------------------------------|----------------------------|
|                                       | 36.200 A @ 230.0 V        | <b>Shaft Ground Indicator:</b>     | No Shaft Grounding         |
|                                       | 38.000 A @ 208.0 V        | <b>Shaft Rotation:</b>             | Reversible                 |
| <b>Design Code:</b>                   | A                         | <b>Shaft Slinger Indicator:</b>    | Shaft Slinger              |
| <b>Drip Cover:</b>                    | No Drip Cover             | <b>Speed Code:</b>                 | Single Speed               |
| <b>Duty Rating:</b>                   | CONT                      | <b>Motor Standards:</b>            | NEMA                       |
| <b>Electrically Isolated Bearing:</b> | Not Electrically Isolated | <b>Starting Method:</b>            | Direct on line             |
| <b>Feedback Device:</b>               | ENCODER                   | <b>Thermal Device - Bearing:</b>   | None                       |
| <b>Front Face Code:</b>               | Encoder/Feedback Device   | <b>Thermal Device - Winding:</b>   | Normally Closed Thermostat |
| <b>Front Shaft Indicator:</b>         | None                      | <b>Vibration Sensor Indicator:</b> | No Vibration Sensor        |
| <b>Heater Indicator:</b>              | No Heater                 | <b>Winding Thermal 1:</b>          | None                       |
|                                       |                           | <b>Winding Thermal 2:</b>          | None                       |

| Nameplate NP1168L |                        |
|-------------------|------------------------|
| CAT NO            | ZDM2333T               |
| SPEC.             | 09T110Z910Z1           |
| FRAME             | 256TC HP 15 TE         |
| VOLTS             | 230/460                |
| MAG CUR           | 15.2/7.6 FLA 36.2/18.1 |
| RPM               | 1765 RPM MAX 5000      |
| HZ                | 60 PH 3 CLASS H        |
| SER.F.            | 1.00 DES A SL HZ 1.2   |
| NEMA-NOM-EFF      | 92.4 WK2 1.93          |
| BLWR V            | PH HZ A                |
| RATING            | 40C AMB-CONT           |
| DE BRG            | 6309 ODE BRG 6208      |
| CC                | 010A SER.NO            |

| Parts List  |  |          |
|-------------|--|----------|
| Part Number | Description                              | Quantity |
| SA371168    | SA 09T110Z910Z1                          | 1.000 EA |
| RA360848    | RA 09T110Z910Z1                          | 1.000 EA |
| HW1002A63   | 0ASHER, 5/8 HI-COLLAR SPRLCKWASHER       | 1.000 EA |
| 09CB3002SP  | CB W/1.38 LEAD HOLE FOR 37, 39, 307 & 30 | 1.000 EA |
| 09GS1000SP  | GASKET-CONDUIT BOX, 1/16 THICK LEXIDE    | 1.000 EA |
| 10XN2520K12 | 1/4-20 X.75 GRD 5                        | 2.000 EA |
| HW1001A25   | LOCKWASHER 1/4, ZINC PLT .493 OD, .255 I | 2.000 EA |
| WD1000B16   | T&B CX70TN OR L70P TERMINAL LUG          | 1.000 EA |
| 59XW2520G07 | .25-20X.44,HEX SER WSHR,TAPTITE 2,GREEN  | 1.000 EA |
| 09EP1100A74 | FR. E.P. TEBC/TENV W/THRU SHAFT ENCODER  | 1.000 EA |
| XY3816A12   | 3/8-16 FINISHED NUT                      | 4.000 EA |
| HW1001A38   | LOCKWASHER 3/8, ZINC PLT .688 OD, .382 I | 4.000 EA |
| HA1005A12   | SLINGER, OD 2.50, ID 1.433, 208 BRG      | 1.000 EA |
| 10XN2520K12 | 1/4-20 X.75 GRD 5                        | 1.000 EA |
| HW1001A25   | LOCKWASHER 1/4, ZINC PLT .493 OD, .255 I | 1.000 EA |
| HW5100A08   | W3118-035 WVY WSHR (WB)                  | 1.000 EA |
| 10XN2520K28 | 1/4-20 X 1.75" HX HD SCRWGRADE 5, ZINC P | 2.000 EA |
| HW1001A25   | LOCKWASHER 1/4, ZINC PLT .493 OD, .255 I | 2.000 EA |
| 10XN2520K36 | 1/4-20 X 2.25" HX HD SCRWGRADE 5, ZINC P | 4.000 EA |
| HW1001A25   | LOCKWASHER 1/4, ZINC PLT .493 OD, .255 I | 4.000 EA |
| 09EP1300A12 | ENDPLATE, MACH                           | 1.000 EA |
| HW4600B44   | V-RING SLINGER 1.500 X 1.810 X .28 VITON | 1.000 EA |
| HA3113A01   | THRUBOLT 3/8-16X14.875                   | 4.000 EA |
| HW1001A38   | LOCKWASHER 3/8, ZINC PLT .688 OD, .382 I | 4.000 EA |

| Parts List (continued) |  |          |
|------------------------|--|----------|
| Part Number            | Description                              | Quantity |
| 09CB3501SP             | CONDUIT BOX LID FOR 09CB3001 & 09CB3002  | 1.000 EA |
| 09GS1013SP             | 09 GS FOR 09CB3501 LID - LEXIDE          | 1.000 EA |
| 51XW2520A12            | .25-20 X .75, TAPTITE II, HEX WSHR SLTD  | 2.000 EA |
| HW2501G25              | KEY, 3/8 SQ X 2.875                      | 1.000 EA |
| LB1115N                | LABEL,LIFTING DEVICE (ON ROLLS)          | 1.000 EA |
| HW4500A05              | 1669B ALEM/UNIV860 GR FTG X              | 1.000 EA |
| HA4051A00              | PLASTIC CAP FOR GREASE FITTING           | 1.000 EA |
| HW4500A17              | 317400 ALEMITE GREASE RELIEF             | 1.000 EA |
| HA4054                 | SHORT T-DRAIN FITTING, .125" N.P.T.      | 1.000 EA |
| MJ1000A02              | GREASE, MOBIL POLYREX EM - 124047        | 0.080 LB |
| HW4500A03              | GREASE FITTING, .125 NPT 1610(ALEMITE) 8 | 1.000 EA |
| HA4051A00              | PLASTIC CAP FOR GREASE FITTING           | 1.000 EA |
| HW4500A17              | 317400 ALEMITE GREASE RELIEF             | 1.000 EA |
| HA4054                 | SHORT T-DRAIN FITTING, .125" N.P.T.      | 1.000 EA |
| 09FH5100A01SP          | 309 BLOWER ASSY. (09FH4016 & EF5101)     | 1.000 EA |
| MG1000G27              | MED CHARCOAL METALLIC GREY 400-0096      | 0.050 GA |
| 85XU0407S04            | 4X1/4 U DRIVE PIN STAINLESS              | 2.000 EA |
| ENC02BC-B2             | ENCDR KIT TEBC W/OEHS35A09 W/BLIND SHAFT | 1.000 EA |
| LC0005E02              | SPL CONN.DIA./WARN.LABEL(LC0005/LB1119)  | 1.000 EA |
| NP1168L                | ALUM VEC UL CSA CC                       | 1.000 EA |
| 42PA1010               | PACKAGING GROUP, PRINT PK1151A06         | 1.000 EA |
| MN416A01               | TAG-INSTAL-MAINT no wire (1200/bx) 3/19  | 1.000 EA |

**AC Induction Motor Performance Data**

Record # 40353 - Typical performance - not guaranteed values

|                               |                    |                        |
|-------------------------------|--------------------|------------------------|
| <b>Winding:</b> 09WGZ910-R007 | <b>Type:</b> 0942M | <b>Enclosure:</b> TEBC |
|-------------------------------|--------------------|------------------------|

| Nameplate Data        |              |              |    | 460 V, 60 Hz:<br>High Voltage Connection |                         |
|-----------------------|--------------|--------------|----|--|-------------------------|
| Rated Output (HP)     | 15           |              |    | Full Load Torque                         | 44.6 LB-FT              |
| Volts                 | 230/460      |              |    | Start Configuration                      | direct on line          |
| Full Load Amps        | 36.2/18.1    |              |    | Breakdown Torque                         | 152 LB-FT               |
| R.P.M.                | 1765         |              |    | Pull-up Torque                           | 69.5 LB-FT              |
| Hz                    | 60           | Phase        | 3  | Locked-rotor Torque                      | 83.4 LB-FT              |
| NEMA Design Code      | A            | KVA Code     | H  | Starting Current                         | 125 A                   |
| Service Factor (S.F.) | 1            |              |    | No-load Current                          | 7.12 A                  |
| NEMA Nom. Eff.        | 92.4         | Power Factor | 83 | Line-line Res. @ 25°C                    | 0.60351 Ω               |
| Rating - Duty         | 40C AMB-CONT |              |    | Temp. Rise @ Rated Load                  | 58°C                    |
|                       |              |              |    | Locked-rotor Power Factor                | 33                      |
|                       |              |              |    | Rotor inertia                            | 1.92 LB-FT <sup>2</sup> |

Load Characteristics 460 V, 60 Hz, 15 HP

| % of Rated Load | 25     | 50     | 75     | 100    | 125  | 150    |
|-----------------|--------|--------|--------|--------|------|--------|
| Power Factor    | 49     | 71     | 79     | 83     | 87   | 87     |
| Efficiency      | 88.1   | 92.1   | 92.6   | 92.4   | 91.7 | 90.6   |
| Speed           | 1790.9 | 1782.8 | 1774.4 | 1765.5 | 1755 | 1744.1 |
| Line amperes    | 8.24   | 10.8   | 14.4   | 18.1   | 22.2 | 26.8   |

Performance Graph at 460V, 60Hz, 15.0HP Typical performance - Not guaranteed values

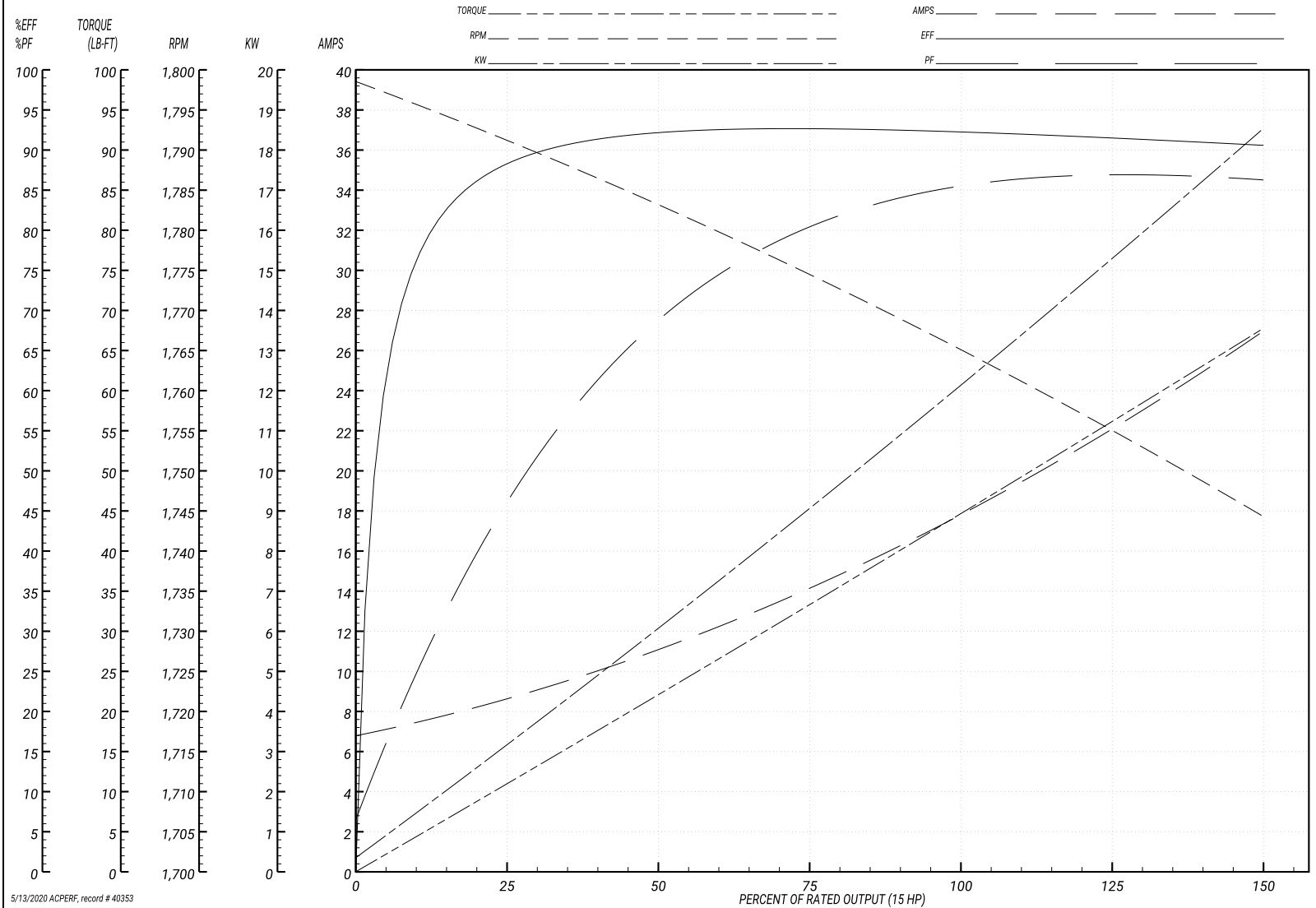
ABB Motors and Mechanical Inc.

WINDING # 09WGZ910

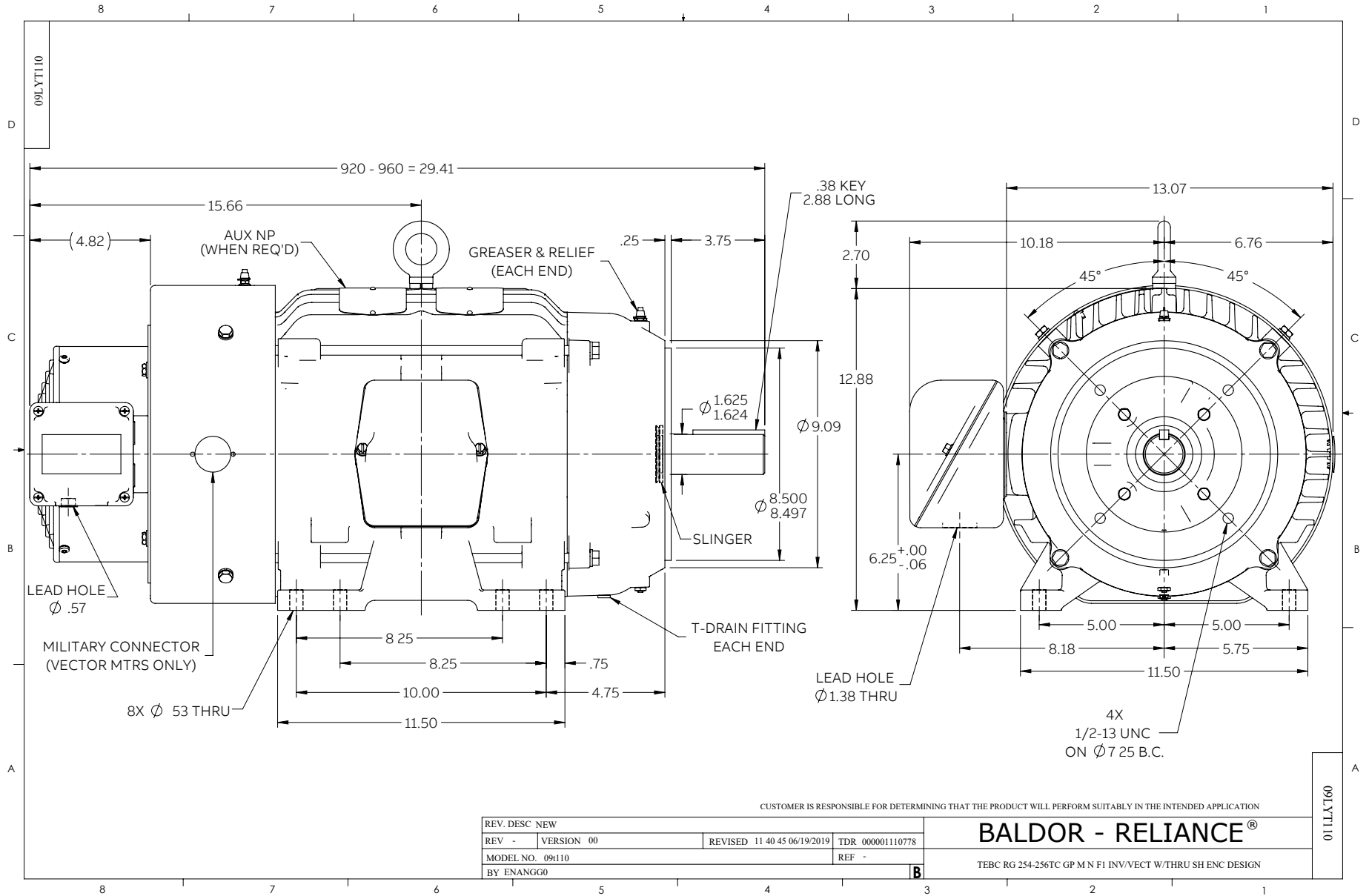
Typical performance - not guaranteed values.

15 HP 3 PH 60 HZ 1765 RPM 460 V 0942M

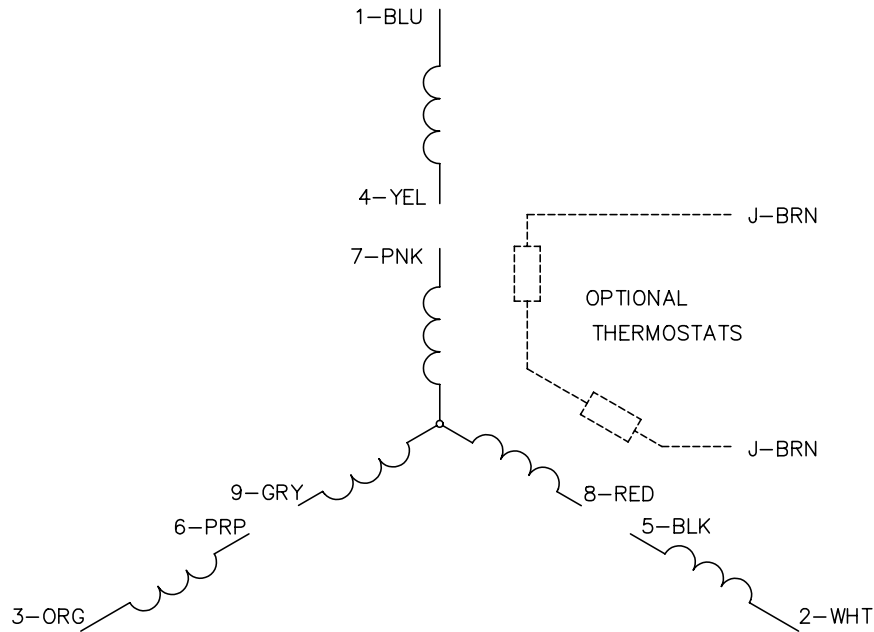
TORQUES(LB-FT): PO=152 PU=69.5 LR=83.4 LRA=125



5/13/2020 ACPERF, record # 40353



CD0005



LOW VOLTAGE  
(2Y)



LINE

HIGH VOLTAGE  
(1Y)



LINE

NOTES:

1. INTERCHANGE ANY TWO LINE LEADS TO REVERSE ROTATION.
2. OPTIONAL THERMOSTATS ARE PROVIDED WHEN SPECIFIED.
3. ACTUAL NUMBER OF INTERNAL PARALLEL CIRCUITS MAY BE A MULTIPLE OF THOSE SHOWN ABOVE.
4. LEAD COLORS ARE OPTIONAL. LEADS MUST ALWAYS BE NUMBERED AS SHOWN.

|   |         |                         |              |
|---|---------|-------------------------|--------------|
| REV. DESC: REVISE TO SHOW OPTIONAL COLORS |         |                         |              |
| REV. LTR: E                               | BY: JLP | REVISED: 01/19/99 10:15 | TDR: 0171435 |
| 90000                                     |         | FILE: AAA00005140       | MDL: -       |
|   |         | MTL: -                  |              |

**BALDOR ELECTRIC Co.**

3PH, DV, 9 LEADS

CD0005

Marketing maintained PDF of MN416:

<http://www.baldor.com/support/Literature/Load.ashx/MN416?ManNumber=MN416>